



MONTHLY MEMBERSHIP PROGRESS REPORT

District 13 B

Results as of: 10/31/2015

GMT: Cindy Gregg

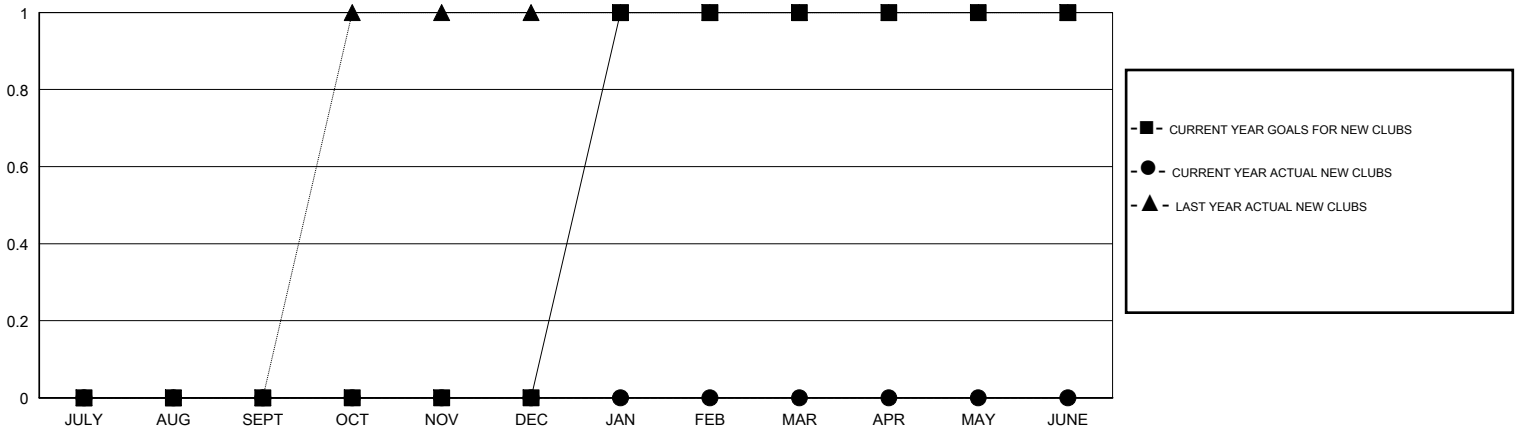
LOCATION OHIO

GMT CA 1

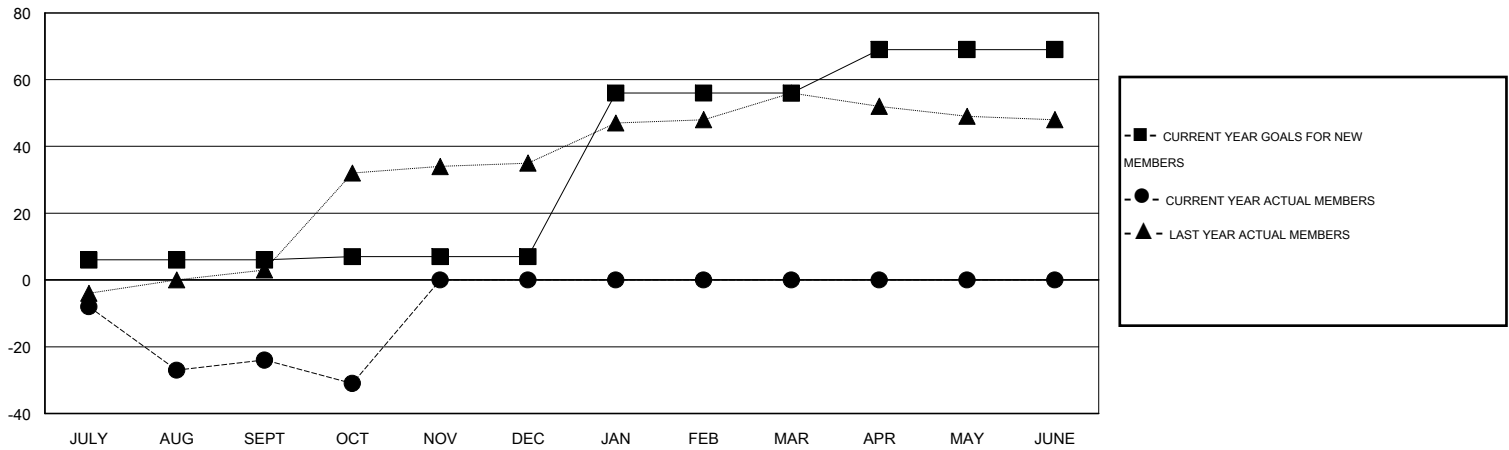
Clubs				
RESULTS FOR 2015-2016				
QUARTER	NEW CLUB GOAL	NEW CLUBS	DROPPED CLUBS	NET GAIN/LOSS
JULY/AUG/SEPT	0	0	0	0
OCT/NOV/DEC	0	0	1	-1
JAN/FEB/MAR	1	0	0	0
APR/MAY/JUNE	0	0	0	0

Members				
RESULTS FOR 2015-2016				
QUARTER	NEW MEMBER GOAL	CHARTER AND NEW MEMBERS ADDED	DROPPED MEMBERS	NET GAIN/LOSS
JULY/AUG/SEPT	6	26	50	-24
OCT/NOV/DEC	1	7	14	-7
JAN/FEB/MAR	49	0	0	0
APR/MAY/JUNE	13	0	0	0

GOALS AND ACTUAL NEW CLUBS CUMULATIVE



GOALS AND ACTUAL MEMBERS CUMULATIVE



DROPPED CLUBS: 1

17 CLUBS OF 56 ADDED 1 OR MORE NEW MEMBERS

GENDER DISTRIBUTION	
MALE	1,447 (76.20%)
FEMALE	452 (23.80%)

DROPPED MEMBERS	
DECEASED	7
CLUB CANCELLED	6
OTHER	51
TOTAL	64

[CLICK HERE FOR HEALTH ASSESSMENT DATA](#)

FAMILY UNIT MEMBERS	360
HEAD OF HOUSEHOLD	176
NON-HEAD OF HOUSEHOLD	184